

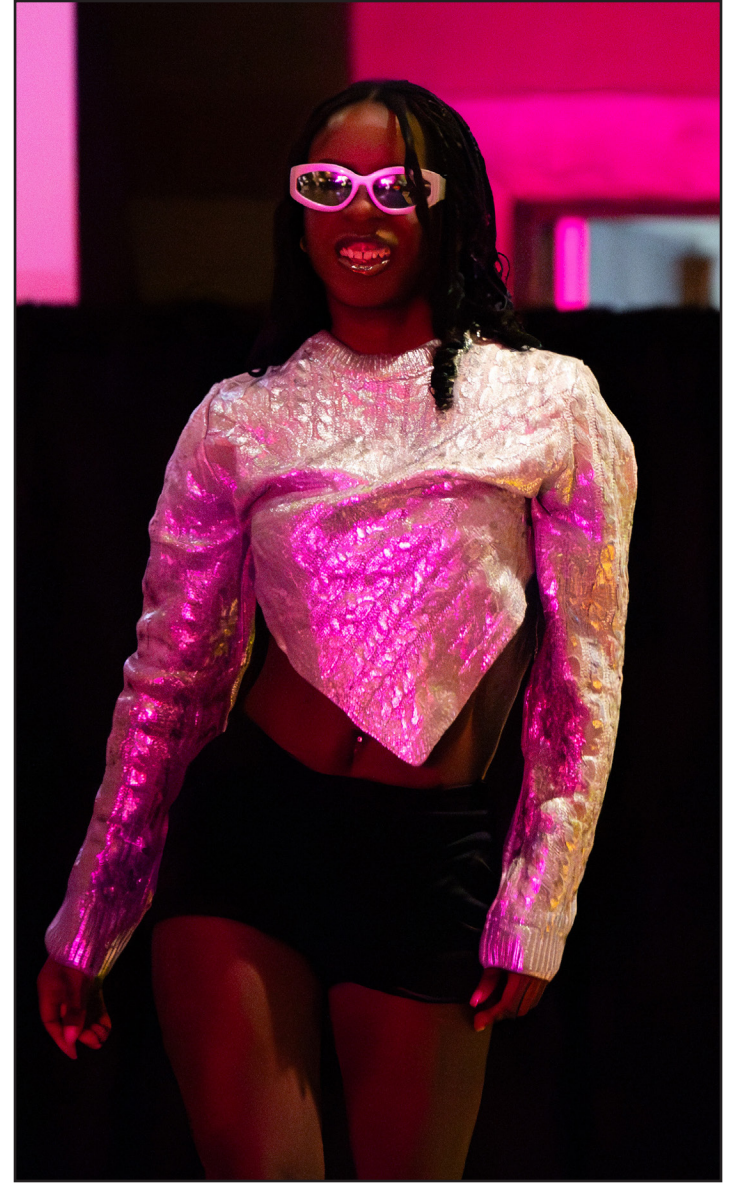
Looks from the EVOLVE fashion show



1. DeAnna Jones in her outfit for the HBCU-ish section of the show.



2. Alyssa Willie walks the runway in her HBCU-ish outfit.



3. Carlaja Kelly in her outfit for the Reinassance segment of the show.



4. Elchristma Deveaux poses at the end of the runway.



5. Krissy Buford holding the Pan-African flag. The Pan-African flag was created in 1920 as a symbol of unity for all people of African descent across the globe.



6. Trevonte Taylo kneels in front of the crowd.



7. Caleb Thomas sings the Black national anthem "Lift Every Voice."



8. Kellie Dukes and Gabe Fortenberry introducing the Renaissance category. The Renaissance category featured fashion inspired by Beyoncé.

Photos By Rachel Rudd | Editor-in-Chief